

USP

UNIVERSAL SAFETY PRACTITIONERS



Practice Portfolio

CDM 2015: Principal Designer Duty Holder &
Project Health and Safety Advisor

Introduction



We have pleasure in supplying our practice portfolio for the Principal Designer and Project Health and Safety Advisor service.

When it comes to the subject of regulatory compliance and general governance in construction, we have an exceptionally strong ethos when working with both clients and Principal Contractors when it comes to project Health and Safety management. Our continued strength in the field of construction Health and Safety management is supported by our ongoing relationships with our Clients, be they Developers, Project Management Companies or Principal Contractors.

You will see from our portfolio that we not only have significant experience when it comes to construction Health and Safety, but importantly we continue to be involved with both National and International organisations.

Our experience and adaptability together with our pragmatic approach to Health and Safety management in construction maintains our continued involvement across a diverse range of project environments. Our portfolio includes projects in the 'built' environment through to demolition and new build projects. We also have significant experience in the renewable energy sector with both wind and solar/PV.

Our pragmatic approach and adaptability across all projects we are involved in is shown in our testimonials from our Clients. We have included a small number of these testimonials within this portfolio document.

Choosing to work closely with all project team members, from Clients, Designers, Architects and Principal Contractors ensures that we offer the best level of advice and support, working closely to develop answers to project safety issues, be they every-day or complex design risk issues.

We are amongst a small number of highly successful and experienced Health and Safety consultancies in the UK enjoying the success and continued involvement in a range of major projects. This is due to a large extent to our team of experienced and specialist Health and Safety Advisors, who truly understand the importance in working closely with our clients, providing pragmatic and workable solutions and support, throughout the project life-cycle from concept design through to project completion.

Should have any questions in respect of this document, or any other documentation which we have provided, please do not hesitate to contact me.

Kindest Regards,

Kevin Kerin

The Team



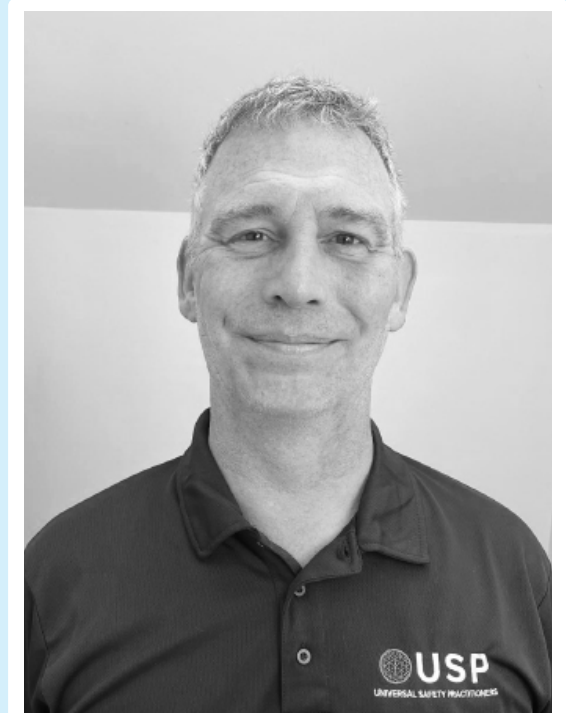
Kevin Kerin CMIOSH, IMAPS, MIIRSM
Managing Director

Kevin is a Chartered Safety and Health professional (CMIOSH) with over 30 years experience in Health and Safety Management. He is also a Principal Designer; holding 'Registered Membership of the Association of Project Safety' (RMaPS) as well as a qualified trainer.

Since becoming a Health and Safety professional, Kevin has gained experience across a wide spectrum of industries both nationally and internationally on a range of diverse industry environments.

Prior to a career in Health and Safety, Kevin spent 8 years in HM Forces.

Kevin's passion for Health and Safety comes from a belief that investing in people is the key to maintaining a safe a healthy working environment.



Stuart Hall CMIOSH, OSHCR
Senior Consultant

Stuart is a Chartered Safety and Health professional (CMIOSH) with over 15 years experience in the construction industry, of which, 12 have been in Safety and Health Management..

Stuart has an active client facing role with an excellent understanding of Health and Safety Legislation and experience across several sectors. He is able to provide clear and concise explanation of requirements for general and specific concerns which providing cost effective and realistic solutions to issues.

Stuart's pragmatic approach ensures that he builds strong relationships enabling him to identify core issues quickly, this is highlighted through his relationships with clients working in Construction and Retail industries.

The Team



Paul Box
Consultant

Paul is a Chartered Health and Safety professional with over 20 years experience in all aspects of construction, environmental and fire safety.

There have been some prestigious projects along Paul's journey, including 8 years with a construction company based at Gatwick Airport, looking after the safety of its workforce both airside and landside in a fast moving challenging environment. Also 3 years on the Crossrail (Elizabeth line) project with Bam/Ferrovial/Kier, one of the largest infrastructure projects in Europe at the time.

Paul is also passionate about training, holding both a Level 3 teaching qualification and a Train the Trainer accreditation.

From this comprehensive experience over many years within the safety industry, Paul is ideally placed to offer our customers clear, well balanced advice and support around work place safety, legislative requirements and delivering best practice within all organisations.



Joseph Kerin LLB
Senior Consultant

Joseph is an Associate level Safety and Health professional, who joined the company in 2020. Prior to working for USP, Joseph worked as a para-legal for over 5 years for an award-winning law firm, specialising in financial litigation. Further to this, Joseph is also a fully qualified Project Manager.

Given Joseph's previous experience and his qualifications, he works on several of the organisations key client accounts, providing clients with unique insight into the Health and Safety legal obligations and required legal defences, from a client perspective, which is rarely seen in the field of Health and Safety advisory services.

Joseph's passion is driven by a clear and qualified understanding of the damaging impacts that breaches of Health and Safety legislation can cause to both an individual and an organisation.

The Team



Thomas Kingsbury
Consultant

Thomas is a fully qualified Health and Safety professional who joined USP in 2023.

Prior to working for USP, Thomas spent 12 years in the employment of the Armed forces as a telecommunications specialist. Further to this, Thomas has completed world class leadership and management qualifications and has adopted this in a leading role whilst operating as a HM Forces employee.

Thomas holds numerous recognised NEBOSH qualifications, thus ensuring that he has a wide breadth of Health and Safety legislation, allowing him to advise clients on an array of legislative requirements.

Given Thomas's background in the Armed Forces and working procedurally in high risk environments, Thomas has a natural passion for Health and Safety which is evident with the client he works with.



Cailey Kerin
Client Services & Finance Manager

Cailey has been working for the company since 2018 in the role as Client and Service's Manager. Cailey plays a pivotal role within the organisation, often being the first port of call for our clients.

Cailey looks after all of the organisations clients, from those who have a contacted the organisation looking for Health and Safety support, right the way through to clients which have been with the organisations since its inception.

Cailey brings to the organisation 16 years in a management and client liaison role, ensuring that all our clients are well looked after.

The background consists of several overlapping geometric shapes. A large, dark blue triangle points downwards from the top left. Below it, a lighter blue triangle points downwards from the top right. At the bottom, a white triangle points upwards. The text is positioned in the white space of the top-left triangle.

Professionalism.
Passion.
Purpose.

Testimonials



"I have worked with Kevin for 6 years on a large retail baking account, in which, he has taken on various roles as Principal Designer, Client Assurance, Client Liaison and providing general Health and Safety advice across many different topics linked to numerous projects.

Kevin is a highly professional consultant who has the ability to work with people operating in many different project roles from operatives on site to the client themselves on site to the client themselves.

Kevin's knowledge of Health and Safety is second to none and he is able to provide vast experience from his time in the industry to provide worked examples to new projects. His personality and great sense of humour makes him easily fit into any project team! I would highly recommend Kevin to work with any client."

Miriam Abbot - Principal Consultant: RBS Account Lead H&S Arcadis

"Central Leisure Developments have worked with USP and in particular, with Kevin Kerin for several years now to obtain all of our Health and Safety requirements across a broad range of exhibition projects from on-site installation to workshop safety.

His knowledge and understanding of our practices and working methods ensure that all documentation is not only accurate but informative to all our staff. Time is not always on our side with the projects, but we can rely on Kevin and the USP team to produce the documentation we need on time and in full every time. I would highly recommend Kevin and his team at USP to anyone's business."

Mark Hurcombe - Project Director: Central Leisure Developments Ltd

"Kevin and his company have been out Health and Safety advisors since 2005. He has advised on and implemented safe practices in the company's workshops and office premises and been our appointed person for project-specific Risk Assessment, documentation and control as required by CDM. He has provided us with a fully functioning and easy to use Health and Safety Management System, with successful auditing by external accreditations, including our CHAS Certificate.

He has been instrumental in developing and managing our Fire Risk Assessments, as well as all company Risk Assessments and Safe Working Procedures for our offices and workshops.

For our projects, Kevin and his company have provided all documentation and support in respect of our exhibition fit-out works, where we have held the role of Principal Contractor.

Where we have been asked to act in the role of PD by our clients, Kevin and his company have been instrumental in supplying this appointment, coordinating designers and sub-contractors and creating all the required documentation, allowing us to work at this elevated level with our exhibition fit-out clients.

Testimonials



... We have worked with Kevin and his team for 15 years and during this time we have had zero notifiable accidents, and I recommend him and his company without reservation".

Bob Deakin - Specialist Fit Out Company Director and Senior Project Manager

"Kevin and his team at USP have become an invaluable professional Health and Safety resource for a number of our UK Solar/PV major projects. The USP consultants, led by Kevin have provided a robust Health and Safety Lead during the pre-project planning and development of our projects. I would recommend Kevin and his team to any potential client."

Maria Ocana - Global Health, Safety and Environmental Lead SunEdison Solar LLC

Our Services - Principal Designer



Whether large or small, projects depend on the key appointment of the Principal Designer to help ensure Health and safety legal requirements under the Construction (Design and Management) Regulations 2015 are met.

We believe that all successful and safe projects start with effective, hands-on management of design risk. Working closely with a range of architects, designers and engineers during the pre-construction phase of projects is the key to the planning, management and monitoring of this vitally important phase of all projects.

Principal Designer - Pre-Construction Phase Outputs

As part of the Pre-Construction phase of any project, the key outputs provided by USP are:

- Helping and advising the client in bringing together 'pre-construction information' and providing the information Designers and Contractors need to carry out their duties.
- Working with Designers and Architects on the project to eliminate foreseeable Health and Safety design risks associated with the projects design.
- The completion of in-depth design risk registers for projects.
- Ensuring that everyone involved in the pre-construction phase communicates and cooperates, coordinating their work wherever required.
- Liaising with the Principal Contractor keeping them informed of any risks that need to be controlled during the construction phase.
- Logistics planning assistance to the professional team
- Visual site survey (feeding into the design risk assessment and pre-construction information)
- Completion of the HSE F10 project notification document.
- Review of any existing Health and Safety File (if available).

Principal Designer Outputs - Construction Phase Outputs

During the construction phase of the project, the key outputs provided by USP are:

- Attendance at project Health and Safety meetings
- Development and Management of the projects design risk register
- Scheduled development of the Health and Safety file
- Assistance (where required) on the completion of the O&M, file for the project, in association with the project team.
- Regular updates to the project team in respect of observations and overview of any action plans to address issues, as well as publishing 'good practice' information to contractor and works teams on the project'.
- Completion of the Health and Safety File with completed Design Risk Register (upon project completion)

Our Services - Construction Health and Safety Advisor



The Construction Health and Safety Advisor appointment brings a range of tangible benefits to the management of the physical day-to-day project governance. Appointed by the client, the Construction Health and Safety Advisor acts to ensure that the agreed standards on site continue to be met throughout the Construction Phase of the works. This is achieved through a number of outputs including site visits and attendance and project Health and Safety meetings during the Construction Phase of the project.

Construction Health and Safety Advisor - Key Outputs

As part of the construction phase of any project, the Key outputs from USP in respect of the Construction Health and Safety Advisor role are:

- Assisting the Principal Contractor with regards to the completion of their Construction Phase Plan.
- Creation of the Fire Risk Assessment for the project.
- Creation of the construction environmental management plan.
- Creation of the projects emergency plan.
- Site Visits and formal reports.
- Close Health and Safety support to the Site Management Team in respect of compliance issues raised during site inspections.
- Trend analysis and feedback with dashboard information being provided to the project manager and senior management (as applicable).
- Creation of KPI's (Key Performance Indicators) in association with the Principal Contractor.
- Incident Investigation and reports.
- Support the Site Management and wider Project Team on the implementation of any post incident close-out actions.
- Creation and implementation of toolbox talks and any on-site training (as required).
- Formal Health and Safety vetting of all contractors working on the client's site.
- Review of all Risk Assessments from contractors working on the client's site.
- Assistance with the completion of the O&M Manual (upon project completion).

Previous Projects

Social Housing and bespoke modular projects

We have provided both Principal Designer and project Health and Safety governance services to around approximately 200 projects. Working with developers and clients for their projects, ranging from social housing, though to one-off bespoke modular design properties.



Exhibition Space - Design, Manufacture and Installation

We have been engaged by numerous clients and exhibition manufacturers to act in the role of Principal Designer. Exhibition projects rely absolutely on the effective development of risk management strategies. This includes the assessment and development of design, manufacture and installation works.

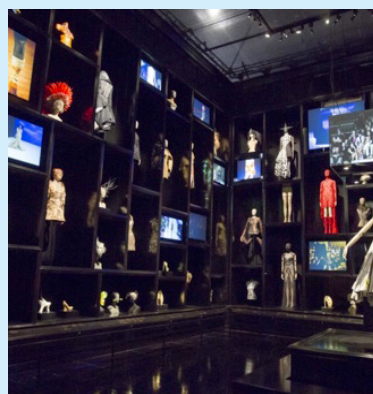
The development of the projects' design, and functionality rely heavily on the Principal Designer bringing together Designers, structural engineers, lighting, audio-visual and electrical specialists to discuss and agree designs, and to quantify design risks.

Working with manufacturers, we ensure that exhibition models and displays are manufactured in-line with Health and Safety design requirements.

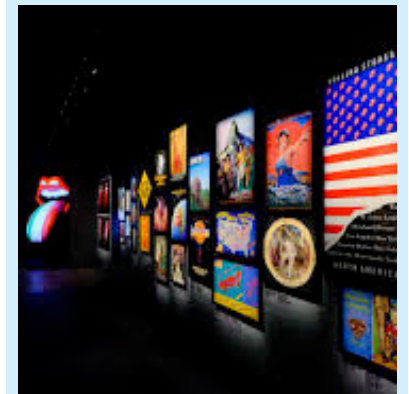
Finally, working with exhibition installers (often acting in the role of Principal Contractor) to track and discuss and construction phase design changes, ensuring these are discussed and tracked, through to the completion of the install.



MET Special Forces Exhibition
National Army Museum



Alexander McQueen
Victoria and Albert Museum



Rolling Stones "Exhibitionism"
Saatchi Gallery

Previous Projects - Solar Specific

Barkham Farm - Project Value 29 million GBP

Acting in the role of Principal Designer for the project, USP were responsible for working with the client (Wokingham Borough Council) as well as the appointed designers and planners in bring this 29 Megawatt project to the commencement of the Construction Phase. Working during the pre-construction phase, we also worked with the Highways Authority in relation to the traffic management elements posed by the site, which straddled the public highway.

Due to the specific methodology of the projects management, the Principal Designer role was handed over successfully to Bouygues, where USP then took on the role of the Project Health and safety Advisor Role, responsible for overseeing the Principal Contractor and the successful roll-out of the project Health and Safety systems and procedures.



Bury Lane Solar Farm Project

Acting in the role of Principal Designer and Project Health and Safety Advisor for this 24 Megawatt site enabled us to work with the client and the wider project team to ensure the Health and Safety design and planning elements of this project were developed and managed to a successful conclusion and ultimate commissioning.



Marsh Farm Solar Project

Working in the role of Construction Phase Health and Safety Advisor for this 13.5 Megawatt site allowed us to support the Principal Contractor (SunEdison) during the construction phase. With regular visits to the project to assist in the management of Health and Safety on the project, with structured inspections and robust ongoing support to this Principal Contractors site management team.



Current Projects - Solar

Bindwell

Working with this contractor and wider client project team in the roles of both Principal Designer and Construction Health and Safety Advisor on this 18Mw site in Somerset with an approximate project cost of 11 million.

In our role as Principal Designer, we have created all pre-construction document and worked actively with the Project team and Client to ensure all contractor documentation is developed as required against the Construction (Design and Management) Regulations 2015.

During the construction phase we have added value to the project by adding the Construction Health and Safety Advisor role, ensuring all contractor works and site safety standards are maintained.



Sundon

This 50 Mw project focusses on our role as the Construction Health and Safety Advisor Role to the Client and Project Team. Developing key documentation including the Construction Phase Plan, Fire Risk Assessment as well as the Environmental Management Plan and Logistics plan for the site with an approximate project cost of 18 million.

This project is a split site, with sister site under the project 2 miles apart, requiring dual safety management role as well as the cabling contractor working on the highway. Additional s50 and s278 works governance is also supplied through USP Ltd.

Our Construction Health and Safety Advisor role continues on this project, which aside from being a split site, has high-pressure gas and cement slurry lines, water main as well as overhead power lines, which requires tight governance on to ensure compliant works are designed and managed for these on-site risks.



Registered Address.
46 VICTORIA ROAD
WORTHING, WEST SUSSEX
BN11 1XE

P. 01903 942996 E. INFO@UNIVERSAL-SAFETY.CO.UK
WWW.UNIVERSAL-SAFETY.CO.UK

